

STANDARD ARRIVAL CHART INSTRUMENT (STAR) - ICAO

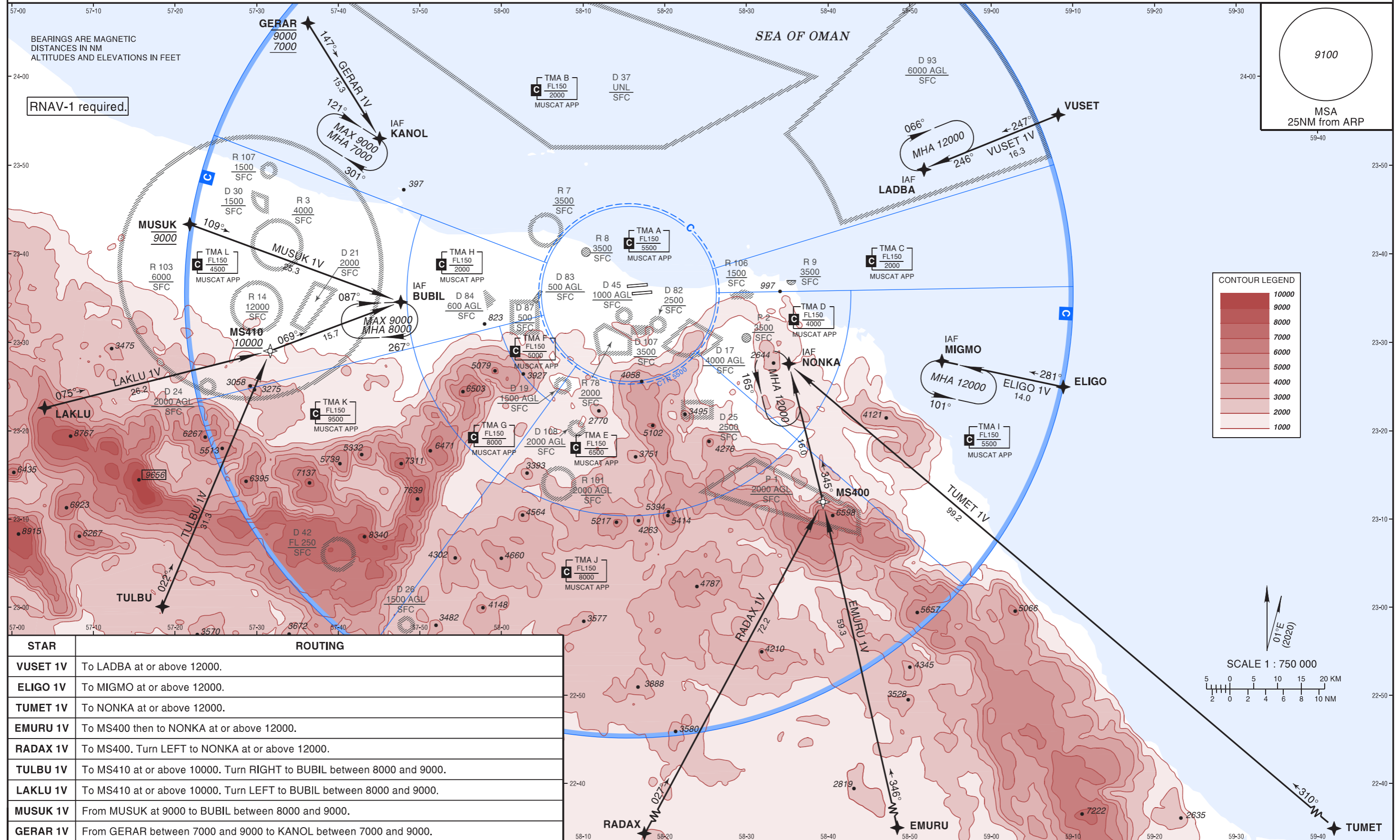
STANDARD ARRIVAL  
CHART INSTRUMENT  
(STAR) - ICAO

AD ELEV 49 FT  
Trans Alt 13000  
Trans Level FL150

ATIS 126.800  
TWR 118.825  
APP/RAD 121.200  
GND 121.800

MUSCAT/Muscat Intl  
OMAN  
RWY 08L

VUSET 1V, ELIGO 1V, TUMET 1V, EMURU 1V, RADAX 1V, TULBU 1V, LAKLU 1V, MUSUK 1V, GERAR 1V RNAV (GNSS) ARRIVAL



STAR	ROUTING
VUSET 1V	To LADBA at or above 12000.
ELIGO 1V	To MIGMO at or above 12000.
TUMET 1V	To NONKA at or above 12000.
EMURU 1V	To MS400 then to NONKA at or above 12000.
RADAX 1V	To MS400. Turn LEFT to NONKA at or above 12000.
TULBU 1V	To MS410 at or above 10000. Turn RIGHT to BUBIL between 8000 and 9000.
LAKLU 1V	To MS410 at or above 10000. Turn LEFT to BUBIL between 8000 and 9000.
MUSUK 1V	From MUSUK at 9000 to BUBIL between 8000 and 9000.
GERAR 1V	From GERAR between 7000 and 9000 to KANOL between 7000 and 9000.

**Holding Instruction/Areas RNAV (GNSS) ARRIVAL RWY 08L**

Path descriptor	Fix identifier	Inbound course M (T)	Leg Distance	Turn direction	Minimum altitude	Maximum altitude	Speed	Magnetic variation	Navigation performance
Hold	BUBIL	087° (088.0°)	1 MIN	R	8000	9000	230 KT	1°E	
Hold	KANOL	121° (122.0°)	1 MIN	R	7000	9000	230 KT	1°E	
Hold	LADBA	246° (247.0°)	1 MIN	R	12000		230 KT	1°E	
Hold	MIGMO	281° (282.0°)	1 MIN	L	12000		230 KT	1°E	
Hold	NONKA	345° (346.1°)	1 MIN	L	12000		230 KT	1°E	

**Route Description: RNAV (GNSS) ARRIVAL RWY 08L**

Path descriptor	Fix identifier	Flyover	Course Magnetic (True)	Turn direction	Altitude	Speed limit	Magnetic variation	Distance	Navigation performance
<b>VUSET 1V ARRIVAL</b>									
IF	VUSET						1°E		RNAV 1
TF	LADBA		247° (247.9°)		+12000		1°E	16.3	RNAV 1
<b>ELIGO 1V ARRIVAL</b>									
IF	ELIGO						1°E		RNAV 1
TF	MIGMO		281° (282.0°)		+12000		1°E	14.0	RNAV 1
<b>TUMET 1V ARRIVAL</b>									
IF	TUMET						1°E		RNAV 1
TF	NONKA		310° (310.6°)		+12000		1°E	99.2	RNAV 1
<b>EMURU 1V ARRIVAL</b>									
IF	EMURU						1°E		RNAV 1
TF	MS400		346° (347.2°)				1°E	59.3	RNAV 1
TF	NONKA		345° (346.1°)		+12000		1°E	16.0	RNAV 1
<b>RADAX 1V ARRIVAL</b>									
IF	RADAX						1°E		RNAV 1
TF	MS400		027° (028.1°)				1°E	72.2	RNAV 1
TF	NONKA		345° (346.1°)	L	+12000		1°E	16.0	RNAV 1
<b>TULBU 1V ARRIVAL</b>									
IF	TULBU						1°E		RNAV 1
TF	MS410		022° (022.8°)		+10000		1°E	31.3	RNAV 1
TF	BUBIL		069° (069.5°)	R	-9000 +8000		1°E	15.7	RNAV 1
<b>LAKLU 1V ARRIVAL</b>									
IF	LAKLU						1°E		RNAV 1
TF	MS410		075° (075.7°)		+10000		1°E	26.2	RNAV 1
TF	BUBIL		069° (069.5°)	L	-9000 +8000		1°E	15.7	RNAV 1
<b>MUSUK 1V ARRIVAL</b>									
IF	MUSUK				@9000		1°E		RNAV 1
TF	BUBIL		109° (110.2°)		-9000 +8000		1°E	25.3	RNAV 1
<b>GERAR 1V ARRIVAL</b>									
IF	GERAR				-9000 +7000		1°E		RNAV 1
TF	KANOL		147° (148.2°)		-9000 +7000		1°E	15.3	RNAV 1

## Aeronautical Data Tabulation: RNAV (GNSS) ARRIVAL RWY 08L

Waypoint / Fix	Latitude	Longitude	Latitude (MIN)	Longitude (MIN)	Notes
BUBIL	N23°34'31.53"	E057°47'38.97"	N23°34.526'	E057°47.650'	
ELIGO	N23°24'58.00"	E059°08'48.00"	N23°24.967'	E059°08.800'	
EMURU	N22°13'57.00"	E058°53'38.00"	N22°13.950'	E058°53.633'	
GERAR	N24°06'00.00"	E057°36'16.00"	N24°06.000'	E057°36.267'	
KANOL	N23°52'57.87"	E057°45'04.18"	N23°52.965'	E057°45.070'	
LADBA	N23°49'30.65"	E058°51'45.04"	N23°49.511'	E058°51.751'	
LAKLU	N23°22'35.00"	E057°04'01.00"	N23°22.583'	E057°04.017'	
MIGMO	N23°27'52.76"	E058°53'54.28"	N23°27.879'	E058°53.905'	
MS400	N23°11'57.00"	E058°39'23.00"	N23°11.950'	E058°39.383'	
MS410	N23°29'02.00"	E057°31'40.00"	N23°29.033'	E057°31.667'	
MUSUK	N23°43'20.00"	E057°21'48.00"	N23°43.333'	E057°21.800'	
NONKA	N23°27'35.00"	E058°35'12.00"	N23°27.583'	E058°35.200'	
RADAX	N22°08'09.00"	E058°02'30.00"	N22°08.150'	E058°02.500'	
TULBU	N23°00'05.00"	E057°18'27.00"	N23°00.083'	E057°18.450'	
TUMET	N22°23'07.00"	E059°57'02.00"	N22°23.117'	E059°57.033'	
VUSET	N23°55'40.00"	E059°08'12.00"	N23°55.667'	E059°08.200'	